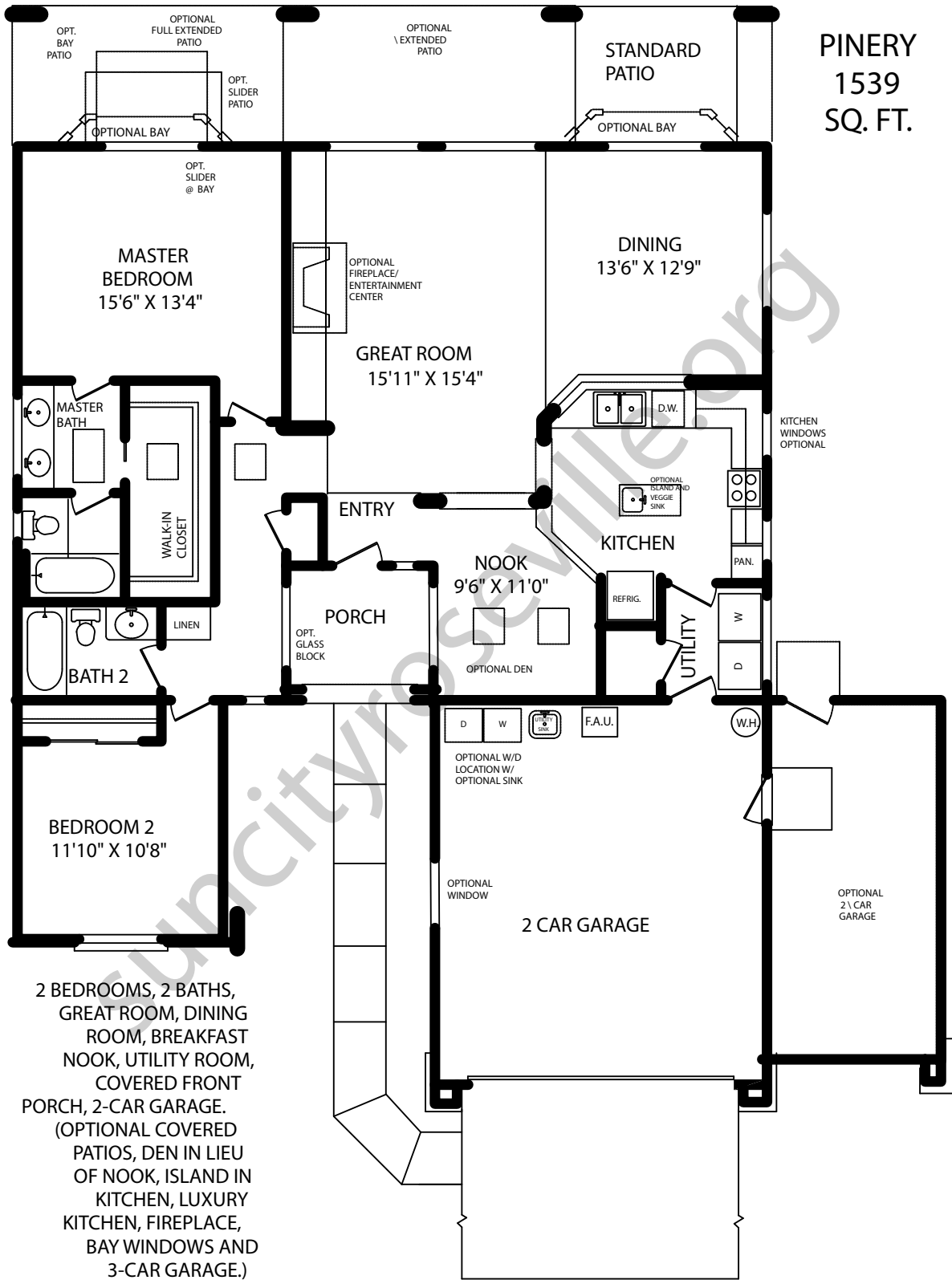


**PINERY**  
**1539**  
**SQ. FT.**



2 BEDROOMS, 2 BATHS,  
 GREAT ROOM, DINING  
 ROOM, BREAKFAST  
 NOOK, UTILITY ROOM,  
 COVERED FRONT  
 PORCH, 2-CAR GARAGE.  
 (OPTIONAL COVERED  
 PATIOS, DEN IN LIEU  
 OF NOOK, ISLAND IN  
 KITCHEN, LUXURY  
 KITCHEN, FIREPLACE,  
 BAY WINDOWS AND  
 3-CAR GARAGE.)